

\$359,900 - 1127 Hyndman Road, Edmonton

MLS® #E4429530

\$359,900

3 Bedroom, 1.50 Bathroom, 1,242 sqft

Single Family on 0.00 Acres

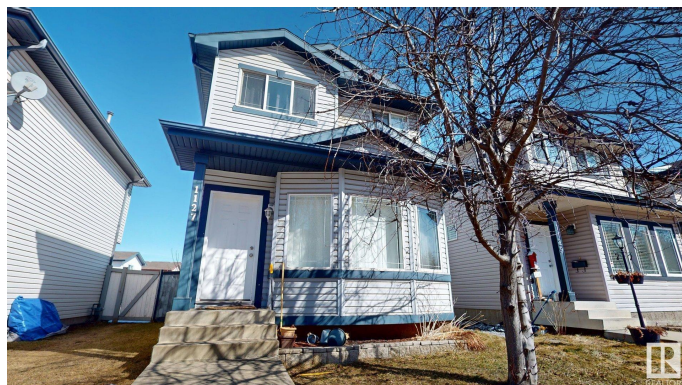
Canon Ridge, Edmonton, AB

No Condo fee- This Single family house gives you freedom to Park all your toys at the back or Front of the house. Facing to no House this beautiful nest has welcoming living area ,Little privacy to kitchen and dining area. Patio door leading to the deck and huge backyard. Use your imagination and love to develop Basement or build a double car garage.Upper floor has 3 Good size bedrooms and 4 piece bathroom.Easy access to the Yellowhead,victoria Trail , Rundle Park and other walking trails

Built in 2004

Essential Information

MLS® #	E4429530
Price	\$359,900
Bedrooms	3
Bathrooms	1.50
Full Baths	1
Half Baths	1
Square Footage	1,242
Acres	0.00
Year Built	2004
Type	Single Family
Sub-Type	Detached Single Family
Style	2 Storey
Status	Active



Community Information

Address	1127 Hyndman Road
Area	Edmonton
Subdivision	Canon Ridge
City	Edmonton
County	ALBERTA
Province	AB
Postal Code	T5A 5J1

Amenities

Amenities	No Animal Home
Parking	Rear Drive Access

Interior

Appliances	Dishwasher-Built-In, Dryer, Refrigerator, Stove-Electric, Washer
Heating	Forced Air-1, Natural Gas
Stories	2
Has Basement	Yes
Basement	Full, Unfinished

Exterior

Exterior	Wood, Vinyl
Exterior Features	Back Lane, Landscaped
Roof	Asphalt Shingles
Construction	Wood, Vinyl
Foundation	Concrete Perimeter

Additional Information

Date Listed	April 7th, 2025
Days on Market	13
Zoning	Zone 35

DATA IS DEEMED RELIABLE BUT IS NOT GUARANTEED ACCURATE BY THE REALTORS® ASSOCIATION OF EDMONTON. COPYRIGHT 2025 BY THE REALTORS® ASSOCIATION OF EDMONTON. ALL RIGHTS RESERVED.Trademarks are owned or controlled by the Canadian Real Estate Association (CREA) and identify real estate professionals who are members of CREA (REALTOR®, REALTORS®) and/or the quality of services they provide (MLS®, Multiple Listing Service®)

Listing information last updated on April 20th, 2025 at 4:47pm MDT