

Courtesy Of Bruce G Weiss Of RE/MAX Excellence

\$525,000 - 1523 104 Street, Edmonton

MLS® #E4427924

\$525,000

3 Bedroom, 3.00 Bathroom, 1,225 sqft
Single Family on 0.00 Acres

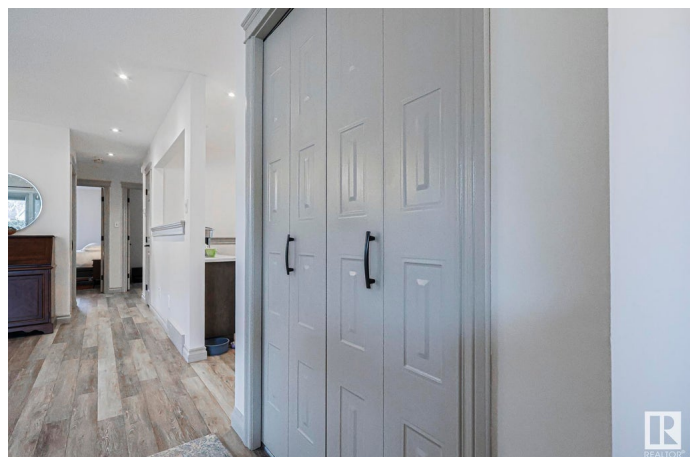
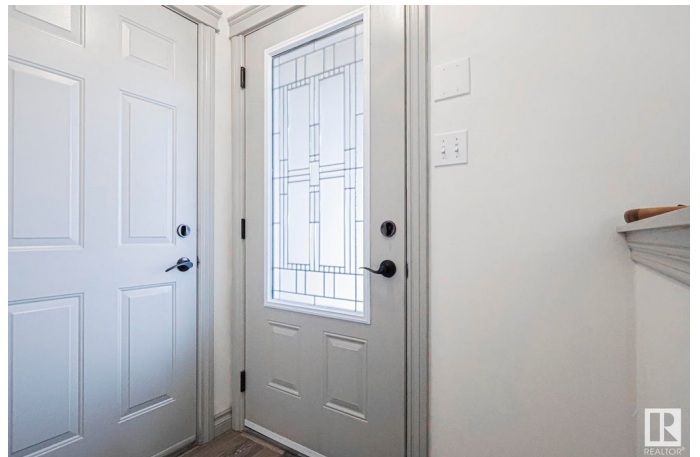
Bearspaw (Edmonton), Edmonton, AB

Beautifully updated 1225 sq ft Bearspaw bungalow with radiant heated 20'x22' double attached garage and .23 acre pie lot! Living room features luxury vinyl plank flooring, modern direct vent gas fireplace with mantle and bay window. Totally renovated kitchen (2021) graced by Birch cabinets built by "Bigstone Cabinets" with carousels in corners, 12 drawers, center island and beverage bar. Main bathroom renovated (2021) with porcelain tile floors, high rise toilet, subway tile tub surround and full drawer vanity. Huge primary bedroom with LG laundry tower w/ThinQ tech. Renovated (2021) spa-like ensuite with walk-in shower and full drawer vanity. Two more bedrooms on main also make for nice yoga/hobby room and a cozy TV/reading room. Basement has a grand family room, three piece bathroom, sewing/laundry room, craft/den/recreation room, snack bar card room, high efficiency furnace and lots of storage. Solar microgeneration system saves you \$\$\$ on electricity. Yard has greenhouse, garden, shed and big patio!

Built in 1983

Essential Information

| | |
|--------|-----------|
| MLS® # | E4427924 |
| Price | \$525,000 |



| | |
|----------------|------------------------|
| Bedrooms | 3 |
| Bathrooms | 3.00 |
| Full Baths | 3 |
| Square Footage | 1,225 |
| Acres | 0.00 |
| Year Built | 1983 |
| Type | Single Family |
| Sub-Type | Detached Single Family |
| Style | Bungalow |
| Status | Active |

Community Information

| | |
|-------------|---------------------|
| Address | 1523 104 Street |
| Area | Edmonton |
| Subdivision | Bearspaw (Edmonton) |
| City | Edmonton |
| County | ALBERTA |
| Province | AB |
| Postal Code | T6J 5T2 |

Amenities

| | |
|----------------|---|
| Amenities | Greenhouse, Patio, Sprinkler Sys-Underground, Solar Equipment |
| Parking Spaces | 4 |
| Parking | Double Garage Attached |

Interior

| | |
|-------------------|--|
| Interior Features | ensuite bathroom |
| Appliances | Dishwasher-Built-In, Garage Control, Garage Opener, Hood Fan, Refrigerator, Stacked Washer/Dryer, Storage Shed, Stove-Electric, Window Coverings |
| Heating | Forced Air-1, Natural Gas |
| Fireplace | Yes |
| Fireplaces | Mantel |
| Stories | 2 |
| Has Basement | Yes |
| Basement | Full, Partially Finished |

Exterior

| | |
|----------|--------------|
| Exterior | Wood, Stucco |
|----------|--------------|

| | |
|-------------------|---|
| Exterior Features | Fenced, Landscaped, Public Transportation, Schools, Shopping Nearby |
| Roof | Asphalt Shingles |
| Construction | Wood, Stucco |
| Foundation | Concrete Perimeter |

Additional Information

| | |
|-------------|------------------|
| Date Listed | March 28th, 2025 |
|-------------|------------------|

| | |
|----------------|---|
| Days on Market | 6 |
|----------------|---|

| | |
|--------|---------|
| Zoning | Zone 16 |
|--------|---------|

DATA IS DEEMED RELIABLE BUT IS NOT GUARANTEED ACCURATE BY THE REALTORS® ASSOCIATION OF EDMONTON. COPYRIGHT 2025 BY THE REALTORS® ASSOCIATION OF EDMONTON. ALL RIGHTS RESERVED. Trademarks are owned or controlled by the Canadian Real Estate Association (CREA) and identify real estate professionals who are members of CREA (REALTOR®, REALTORS®) and/or the quality of services they provide (MLS®, Multiple Listing Service®)

Listing information last updated on April 3rd, 2025 at 3:02pm MDT