

Courtesy Of Douglas B Purdy Of RE/MAX River City

# \$240,000 - 102 13111 140 Avenue, Edmonton

MLS® #E4427794

**\$240,000**

2 Bedroom, 2.00 Bathroom, 961 sqft  
Condo / Townhouse on 0.00 Acres

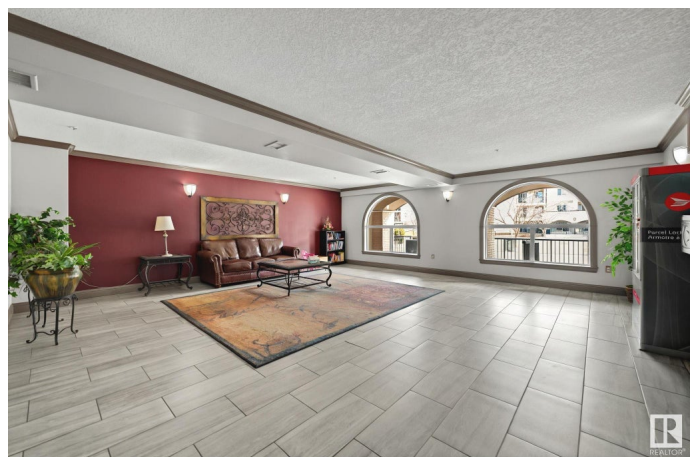
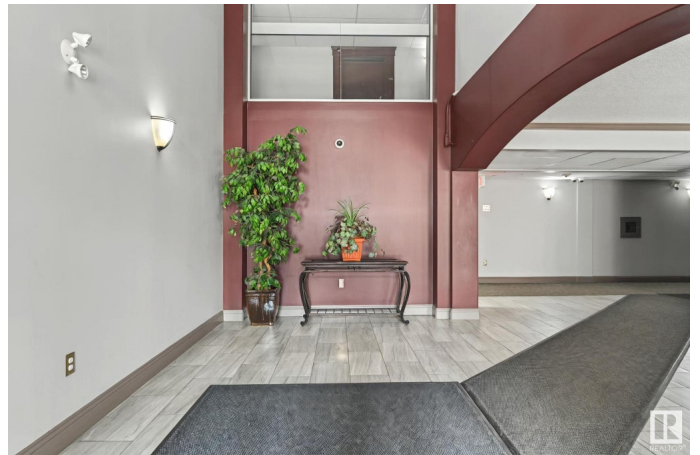
Pembina, Edmonton, AB

Welcome to Palisades Park Villas! This beautifully renovated 2-bed, 2-bath condo offers stylish living in northwest Edmonton. Priced at \$240,000, Unit #102 features brand-new countertops, cabinets & flooring, plus central A/C, in-suite laundry & heated underground parking. Bonus: All furnishings are available for purchase—just move right in! Located steps from shopping, dining, transit & with quick access to Yellowhead Trail & Anthony Henday, this condo blends comfort & convenience. Whether you're buying your first home or looking to downsize, this one checks all the boxes.

Built in 2005

## Essential Information

MLS® #	E4427794
Price	\$240,000
Bedrooms	2
Bathrooms	2.00
Full Baths	2
Square Footage	961
Acres	0.00
Year Built	2005
Type	Condo / Townhouse
Sub-Type	Lowrise Apartment
Style	Single Level Apartment



Status Active

### Community Information

Address 102 13111 140 Avenue  
Area Edmonton  
Subdivision Pembina  
City Edmonton  
County ALBERTA  
Province AB  
Postal Code T6V 0B1

### Amenities

Amenities Off Street Parking, Air Conditioner, Deck, Detectors Smoke, Gazebo, Intercom, No Animal Home, No Smoking Home, Parking-Visitor, Sprinkler System-Fire, Natural Gas BBQ Hookup  
Parking Heated, Underground

### Interior

Interior Features ensuite bathroom  
Appliances Air Conditioning-Central, Dishwasher-Built-In, Euro Washer/Dryer Combo, Furniture Included, Garage Opener, Microwave Hood Fan, Refrigerator-Energy Star, Stove-Electric, Window Coverings, Curtains and Blinds  
Heating Fan Coil, Forced Air-1, Natural Gas  
# of Stories 4  
Stories 1  
Has Basement Yes  
Basement None, No Basement

### Exterior

Exterior Wood, Stone, Stucco  
Exterior Features Fenced, Golf Nearby, Landscaped, No Back Lane, No Through Road, Playground Nearby, Public Transportation, Schools, Shopping Nearby  
Roof Asphalt Shingles  
Construction Wood, Stone, Stucco  
Foundation Concrete Perimeter

### School Information

Elementary McArthur School  
Middle Sir John Thompson

High Rosslyn School

**Additional Information**

Date Listed March 27th, 2025

Days on Market 7

Zoning Zone 27

Condo Fee \$485

DATA IS DEEMED RELIABLE BUT IS NOT GUARANTEED ACCURATE BY THE REALTORS® ASSOCIATION OF EDMONTON. COPYRIGHT 2025 BY THE REALTORS® ASSOCIATION OF EDMONTON. ALL RIGHTS RESERVED. Trademarks are owned or controlled by the Canadian Real Estate Association (CREA) and identify real estate professionals who are members of CREA (REALTOR®, REALTORS®) and/or the quality of services they provide (MLS®, Multiple Listing Service®)

Listing information last updated on April 3rd, 2025 at 4:17pm MDT