

Courtesy Of Bobby V Jaswal Of Initia Real Estate

\$0 - 101 16220 Stony Plain Road, Edmonton

MLS® #E4422064

\$0

0 Bedroom, 0.00 Bathroom,
Retail on 0.00 Acres

Britannia Youngstown, Edmonton, AB

1500sf- 7000sf SPACE AVAILABLE IN THIS BUILDING. MAIN FLOOR & UPPER FLOOR PERFECT FOR DAY CARE /SPAS , ALSO UPPER FLOOR 2ND BAY AVAILABLE FOR PROFESSIONAL SERVICES, ANOTHER BAY ON THE MAIN FLOOR SUITABLE FOR RESTAURANTS, CAFES, FRANCHISE AND MANY OTHER OPTIONS. IT IS SURROUNDED BY A LOT OF RESIDENCE AREA AND CLOSE TO MAYFIELD AND WEST EDMONTON MALL.

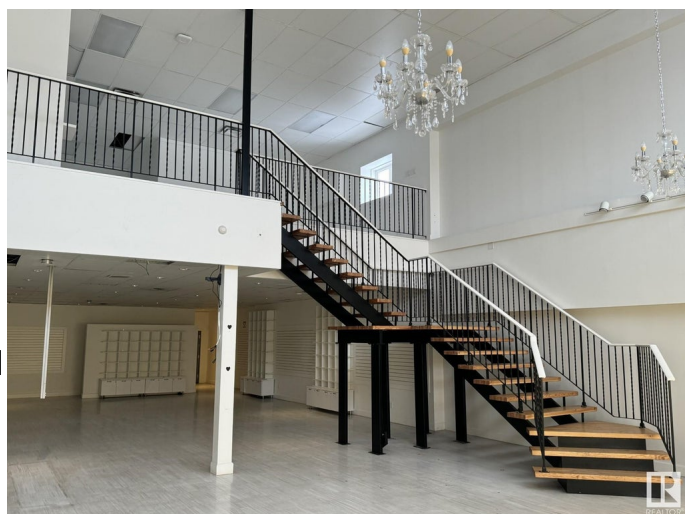
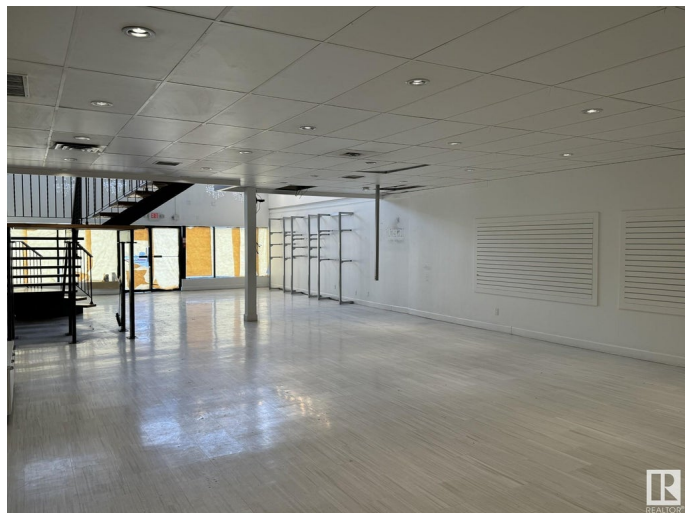
Built in 1986

Essential Information

MLS® #	E4422064
Bathrooms	0.00
Acres	0.00
Year Built	1986
Type	Retail
Status	Active

Community Information

Address	101 16220 Stony Plain Road
Area	Edmonton
Subdivision	Britannia Youngstown
City	Edmonton
County	ALBERTA
Province	AB



Postal Code T5P 4A4

Exterior

Exterior See Remarks

Construction See Remarks

Additional Information

Date Listed February 19th, 2025

Days on Market 42

Zoning Zone 21

DATA IS DEEMED RELIABLE BUT IS NOT GUARANTEED ACCURATE BY THE REALTORS® ASSOCIATION OF EDMONTON. COPYRIGHT 2025 BY THE REALTORS® ASSOCIATION OF EDMONTON. ALL RIGHTS RESERVED. Trademarks are owned or controlled by the Canadian Real Estate Association (CREA) and identify real estate professionals who are members of CREA (REALTOR®, REALTORS®) and/or the quality of services they provide (MLS®, Multiple Listing Service®)

Listing information last updated on April 1st, 2025 at 9:31pm MDT