

\$0 - 6025a 86 Street, Edmonton

MLS® #E4420782

\$0

0 Bedroom, 0.00 Bathroom,
Office on 0.00 Acres

Davies Industrial West, Edmonton, AB

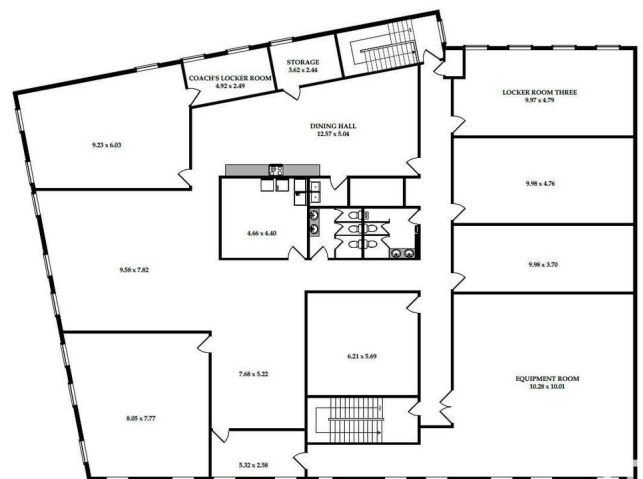
8,062 sq.ft.± available for sublease in an easily accessible south side location with exposure to Wagner Road and signage opportunities. Low operating costs make it suitable for sports/fitness facilities, classroom or group space, and collaborative office users.



Built in 1972

Essential Information

| | |
|------------|----------|
| MLS® # | E4420782 |
| Bathrooms | 0.00 |
| Acres | 0.00 |
| Year Built | 1972 |
| Type | Office |
| Status | Active |



FOR ILLUSTRATIVE PURPOSES ONLY • NOT DRAWN TO SCALE • MAY NOT BE EXACT

Community Information

| | |
|-------------|------------------------|
| Address | 6025a 86 Street |
| Area | Edmonton |
| Subdivision | Davies Industrial West |
| City | Edmonton |
| County | ALBERTA |
| Province | AB |
| Postal Code | T6E 2X4 |

Exterior

| | |
|----------|-------|
| Exterior | Mixed |
|----------|-------|

Construction Mixed

Additional Information

Date Listed February 7th, 2025

Days on Market 53

Zoning Zone 41

DATA IS DEEMED RELIABLE BUT IS NOT GUARANTEED ACCURATE BY THE REALTORS® ASSOCIATION OF EDMONTON. COPYRIGHT 2025 BY THE REALTORS® ASSOCIATION OF EDMONTON. ALL RIGHTS RESERVED. Trademarks are owned or controlled by the Canadian Real Estate Association (CREA) and identify real estate professionals who are members of CREA (REALTOR®, REALTORS®) and/or the quality of services they provide (MLS®, Multiple Listing Service®)

Listing information last updated on April 1st, 2025 at 8:02pm MDT