

\$400,000 - 9321 101a Avenue, Edmonton

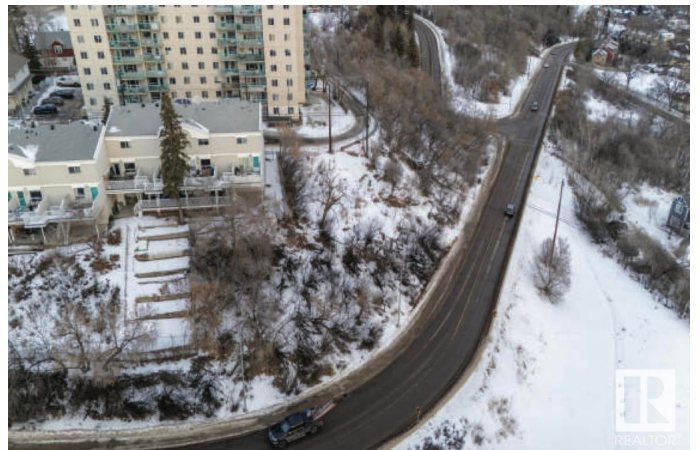
MLS® #E4420140

\$400,000

0 Bedroom, 0.00 Bathroom,
Land Commercial on 0.00 Acres

Boyle Street, Edmonton, AB

Opportunity for mid-rise development with River Valley views! Steps from Dawson Park and Louise McKinney Riverfront Park, offering scenic trails and green space. Close to Downtown – Minutes away from Edmonton’s core, providing easy access to business, shopping, dining, and entertainment. Well-connected by bus routes and a short distance to LRT stations for seamless citywide travel. Architectural and Structural Drawings & Geotechnical Slope Stabilization Design included with sale.



Essential Information

MLS® #	E4420140
Price	\$400,000
Bathrooms	0.00
Acres	0.00
Type	Land Commercial
Status	Active

Community Information

Address	9321 101a Avenue
Area	Edmonton
Subdivision	Boyle Street
City	Edmonton
County	ALBERTA
Province	AB

Postal Code T5H 0C4

Additional Information

Date Listed February 3rd, 2025

Days on Market 76

Zoning Zone 13

DATA IS DEEMED RELIABLE BUT IS NOT GUARANTEED ACCURATE BY THE REALTORS® ASSOCIATION OF EDMONTON. COPYRIGHT 2025 BY THE REALTORS® ASSOCIATION OF EDMONTON. ALL RIGHTS RESERVED. Trademarks are owned or controlled by the Canadian Real Estate Association (CREA) and identify real estate professionals who are members of CREA (REALTOR®, REALTORS®) and/or the quality of services they provide (MLS®, Multiple Listing Service®)

Listing information last updated on April 20th, 2025 at 1:17am MDT