

# \$849,000 - 10503 135 Street, Edmonton

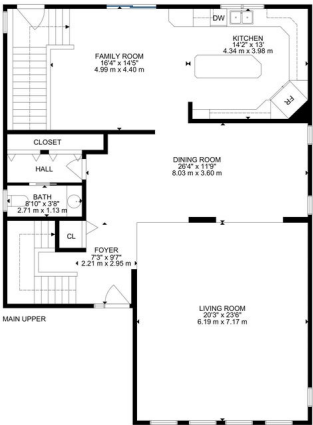
MLS® #E4417135

**\$849,000**

3 Bedroom, 3.50 Bathroom, 2,939 sqft  
Single Family on 0.00 Acres

Glenora, Edmonton, AB

This charming home is perfect for both entertaining and family living, with plenty of great features throughout. \*a VAULTED ceiling in the living room with cathedral like windows \*HARDWOOD floors throughout most of the main floor \*white kitchen with a large ISLAND, family room area and patio doors leading out to 2-tiered DECK \*a downstairs REC room with a wet bar, large windows, underfloor heating, a spacious bathroom, tons of STORAGE and access to the garage, with a HEATED DRIVEWAY! \* Upstairs, you'll find generously sized bedrooms, large bathrooms, and a roomy laundry area. With 3,960 square feet of living space on a 6,994-square-foot lot, this home offers plenty of space for everyone. Located in the vibrant GLENORA neighbourhood, 3 schools close by, tennis, pickleball, basketball and a new RINK at the community league just a block away. This is a great place to live and raise a familyâ€˜donâ€™t miss this opportunity!



Built in 1949

## Essential Information

MLS® #	E4417135
Price	\$849,000
Bedrooms	3
Bathrooms	3.50

Full Baths	3
Half Baths	1
Square Footage	2,939
Acres	0.00
Year Built	1949
Type	Single Family
Sub-Type	Detached Single Family
Style	2 Storey
Status	Active

### Community Information

Address	10503 135 Street
Area	Edmonton
Subdivision	Glenora
City	Edmonton
County	ALBERTA
Province	AB
Postal Code	T5N 2C8

### Amenities

Amenities	Deck, Front Porch, Vaulted Ceiling
Parking	Double Garage Attached

### Interior

Interior Features	ensuite bathroom
Appliances	Dishwasher-Built-In, Dryer, Garage Control, Garage Opener, Refrigerator, Stove-Electric, Washer, Window Coverings
Heating	Forced Air-1, Hot Water, Natural Gas
Fireplace	Yes
Fireplaces	Mantel
Stories	3
Has Basement	Yes
Basement	Full, Finished

### Exterior

Exterior	Wood, Vinyl
Exterior Features	Corner Lot, Fenced, Paved Lane, Playground Nearby, Public Transportation, Schools
Roof	Asphalt Shingles

Construction	Wood, Vinyl
Foundation	Concrete Perimeter

**School Information**

Elementary	Glenora, St Vincent
Middle	Westminster
High	Ross Shep, Mac

**Additional Information**

Date Listed	January 6th, 2025
Days on Market	104
Zoning	Zone 11

DATA IS DEEMED RELIABLE BUT IS NOT GUARANTEED ACCURATE BY THE REALTORS® ASSOCIATION OF EDMONTON. COPYRIGHT 2025 BY THE REALTORS® ASSOCIATION OF EDMONTON. ALL RIGHTS RESERVED.Trademarks are owned or controlled by the Canadian Real Estate Association (CREA) and identify real estate professionals who are members of CREA (REALTOR®, REALTORS®) and/or the quality of services they provide (MLS®, Multiple Listing Service®)

Listing information last updated on April 20th, 2025 at 1:17am MDT