

\$2,703,000 - 510 73 Avenue, Edmonton

MLS® #E4414803

\$2,703,000

0 Bedroom, 0.00 Bathroom,
Single Family on 79.50 Acres

Edmonton South East, Edmonton, AB

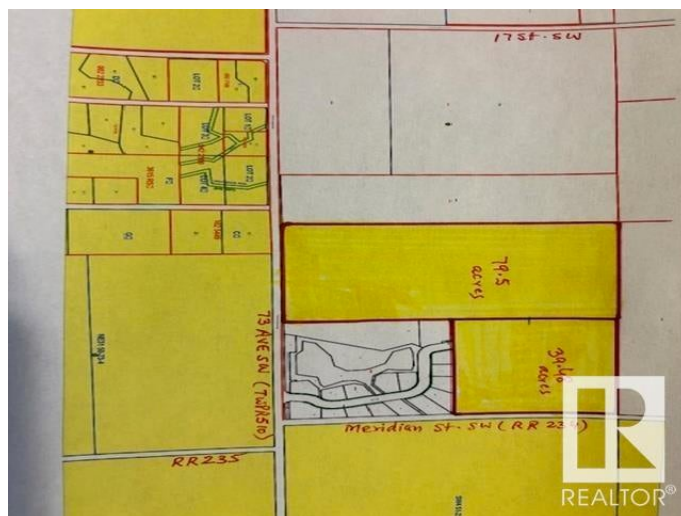
Amazing parcel of land 79.5 acres located at 510 73 Ave SW (on TWPR510 between 17 street SW & Meridian St SW) in City of Edmonton. Excellent piece of land scheduled to be developed as URBAN RESIDENTIAL DEVELOPMENTS in southeast area of city of Edmonton. In the meantime, build your dream homes for your country living in Edmonton. Fantastic location situated only minutes from Eagle Rock Golf Course and Coloniale Golf Course of Beaumont.

Essential Information

MLS® #	E4414803
Price	\$2,703,000
Bathrooms	0.00
Acres	79.50
Type	Single Family
Sub-Type	Vacant Lot/Land
Status	Active

Community Information

Address	510 73 Avenue
Area	Edmonton
Subdivision	Edmonton South East
City	Edmonton
County	ALBERTA
Province	AB



Postal Code T6X 2V3

Exterior

Exterior Features Fenced, Golf Nearby, Schools, See Remarks

Lot Description 321,714.55 m2

Additional Information

Date Listed November 28th, 2024

Days on Market 143

Zoning Zone 33

DATA IS DEEMED RELIABLE BUT IS NOT GUARANTEED ACCURATE BY THE REALTORS® ASSOCIATION OF EDMONTON. COPYRIGHT 2025 BY THE REALTORS® ASSOCIATION OF EDMONTON. ALL RIGHTS RESERVED.Trademarks are owned or controlled by the Canadian Real Estate Association (CREA) and identify real estate professionals who are members of CREA (REALTOR®, REALTORS®) and/or the quality of services they provide (MLS®, Multiple Listing Service®)

Listing information last updated on April 19th, 2025 at 10:47pm MDT