

Courtesy Of Christian Jones Of RE/MAX Excellence

\$1,582,050 - 604 227 Avenue, Edmonton

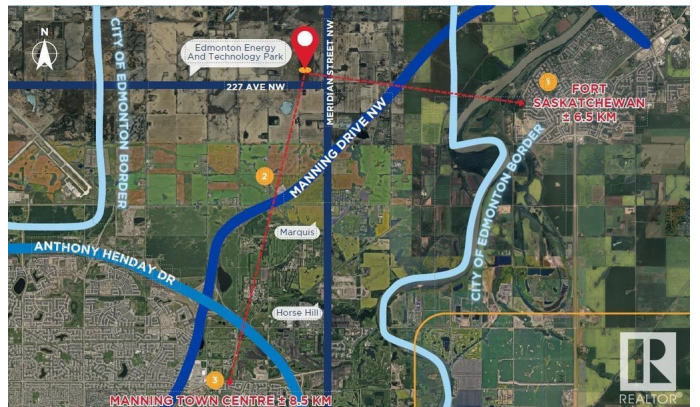
MLS® #E4414316

\$1,582,050

0 Bedroom, 0.00 Bathroom,
Land Commercial on 0.00 Acres

Edmonton Energy And Technology Park,
Edmonton, AB

79.5 acres. This potential industrial development site is strategically located within the Edmonton Energy and Technology Park Area Structure Plan (ASP), offering excellent access to key transportation routes. It provides quick access to Manning Drive and is just minutes from the Anthony Henday, enhancing business connectivity. The site is minutes from Manning Town Centre and Fort Saskatchewan, close to Alberta's Heartland, a major industrial hub. With a central location and access to surrounding infrastructure, this site presents prime potential for future industrial development. Short Legal: 4;23;54;29;SE - Zoning: AG (Agricultural).



Essential Information

MLS® #	E4414316
Price	\$1,582,050
Bathrooms	0.00
Acres	0.00
Type	Land Commercial
Status	Active

Community Information

Address	604 227 Avenue
Area	Edmonton

Subdivision	Edmonton Energy And Technology Park
City	Edmonton
County	ALBERTA
Province	AB
Postal Code	T6M 2T8

Additional Information

Date Listed	November 20th, 2024
Days on Market	135
Zoning	Zone 50

DATA IS DEEMED RELIABLE BUT IS NOT GUARANTEED ACCURATE BY THE REALTORS® ASSOCIATION OF EDMONTON. COPYRIGHT 2025 BY THE REALTORS® ASSOCIATION OF EDMONTON. ALL RIGHTS RESERVED. Trademarks are owned or controlled by the Canadian Real Estate Association (CREA) and identify real estate professionals who are members of CREA (REALTOR®, REALTORS®) and/or the quality of services they provide (MLS®, Multiple Listing Service®)

Listing information last updated on April 4th, 2025 at 8:02am MDT