

\$60,000 - Na Avenue, Edmonton

MLS® #E4409359

\$60,000

0 Bedroom, 0.00 Bathroom,
Business on 0.00 Acres

Strathcona Junction, Edmonton, AB

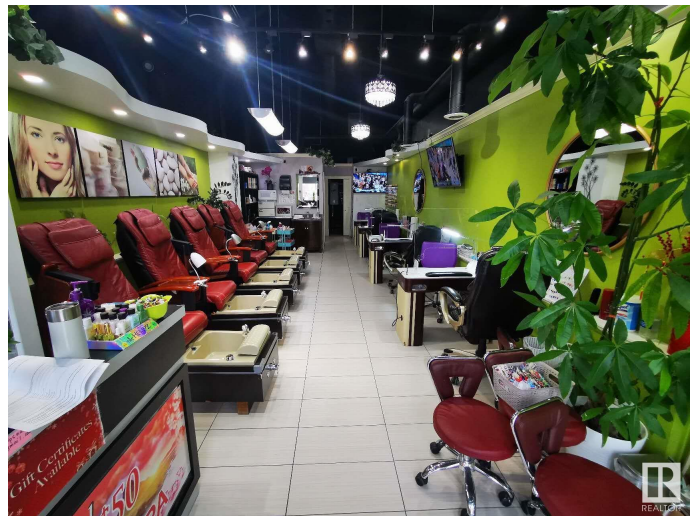
High Exposure! Great turn key opportunity in this 634 sqft Nail Salon & Spa located in the busy shopping plaza by Whyte Ave, Strathcona, 5 pedicure chairs & 3 nail stations, waxing room, laundry room & bathroom. Very Reasonable rent for the next 5 years recently renewed. Start working for yourself or expanding your business with this once a lifetime opportunity. Credit check required by the landlord!

Essential Information

MLS® #	E4409359
Price	\$60,000
Bathrooms	0.00
Acres	0.00
Type	Business
Status	Active

Community Information

Address	Na Avenue
Area	Edmonton
Subdivision	Strathcona Junction
City	Edmonton
County	ALBERTA
Province	AB
Postal Code	T6E 6T2



Additional Information

Date Listed October 6th, 2024

Days on Market 178

Zoning Zone 41

DATA IS DEEMED RELIABLE BUT IS NOT GUARANTEED ACCURATE BY THE REALTORS® ASSOCIATION OF EDMONTON. COPYRIGHT 2025 BY THE REALTORS® ASSOCIATION OF EDMONTON. ALL RIGHTS RESERVED. Trademarks are owned or controlled by the Canadian Real Estate Association (CREA) and identify real estate professionals who are members of CREA (REALTOR®, REALTORS®) and/or the quality of services they provide (MLS®, Multiple Listing Service®)

Listing information last updated on April 2nd, 2025 at 11:32am MDT